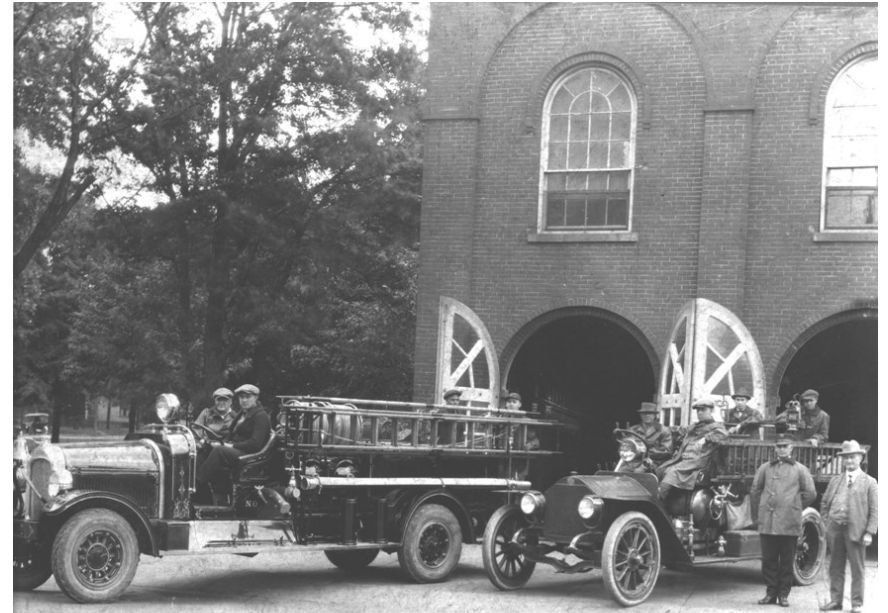


## Current concerns...



Credit: Richland Source



## Shelby Fire Department

Established 1872

## Looking toward the future...

As a result of residents wanting safety services housed downtown, the City of Shelby acquired 8 acres of land out of the flood-plain yet in Downtown Shelby. In February 2014, the Shelby Justice Center will replace the one destroyed by the flood of 2007. The site has space for a new fire station. A preliminary drawing (above) has been created should funding become available.



*In continuous  
operation for  
over 140 years!  
One of the oldest  
working firehouses  
in America!*

**Shelby**  
OHIO EST. 1834



# The Story of the Shelby Firehouse

In 1872, the City of Shelby Fire Department was established at 10 East Main Street. The original firehouse is still in use today, possibly making it the oldest working fire station in the United States.

An additional bay was added on to the station in 1949, which was to be temporary until a new station could be built. In 1976, the City of Shelby added a steel building behind the fire station and on school property to house equipment. Over the years, modifications have been made to the building to house larger apparatuses.

A 1911 article in the *Shelby Daily Globe* stated, "If we don't do something about the fire hall, it will be another 100 years." Due to lack of funding, that

statement has held true.

Because of its age, the firehouse is not ADA compliant. Accessibility to the second floor is an issue for residents and children who visit the department.

## Shelby Fire Dept Stats

- Established 1872
- Combination department: 12 full-time firefighters, 12 part-pay firefighters & 1 full-time fire chief
- Manned 24 hours a day, seven days a week
- Fire district covers 54 square miles to support City of Shelby, as well as Jackson & Sharon Townships
- 14,000 residents, of which 40% are low-to-moderate income

Because of the lack of space, the following equipment is stored outdoors: HAZMAT trailer; Trench Rescue trailer; Confined Space, Dive Team, and Rope Rescues trailer; rescue boat; pick-up truck; and Chevy Suburban. Miscellaneous equipment is also stored in the Water Distribution Department building. Having this equipment located in other spaces increases response time during an emergency. Also, the firehouse has no exhaust removal system like modern firehouses due to space constraints.

## A century home in a flood

Like any century home, the firehouse requires a number of repairs. But, the repairs are compounded with flooding. The fire station is located within 18 feet of the Black Fork River and has suffered multiple floods. In the past six years, the fire station has flooded three times! For example, in 2007, water heights reached 52 inches inside the firehouse. The firefighters work



Firehouse last flooded on July 9, 2013.

feverishly to remove equipment from the ground level, but not all of it can be relocated. When they are called to an emergency during rising waters, the loss of equipment is greater.

Due to the age of the firehouse, it is in constant need of repairs. The original bricks are very soft and deteriorating. The sand and lime mortar, used to construct the building, frequently falls from the walls.

The building has little-to-no insulation, which leads to large heating and cooling bills. The supply of electric and water into the station is limited, and two floor drains directly deposit runoff into the Blackfork River. To bring the station up to the current codes or repair the previously stated issues would not be financially feasible nor would it correct the flooding concerns.

## Critical Assets in the Community

- Critical facilities: Shelby Airport, MedCentral Shelby Hospital, 2 skilled nursing facilities, North Central State College Kehoe Center, Pioneer Career & Technology Center, Cornell Abraxas juvenile center, 5 HUD-subsidized apartment complexes
- Businesses: ArcelorMittal Tubular Products Division (650 employees), Central Ohio Industrial Park (over 6 companies with 300+ employees total), MTD Products (250 employees), Phillips Manufacturing (200 employees)